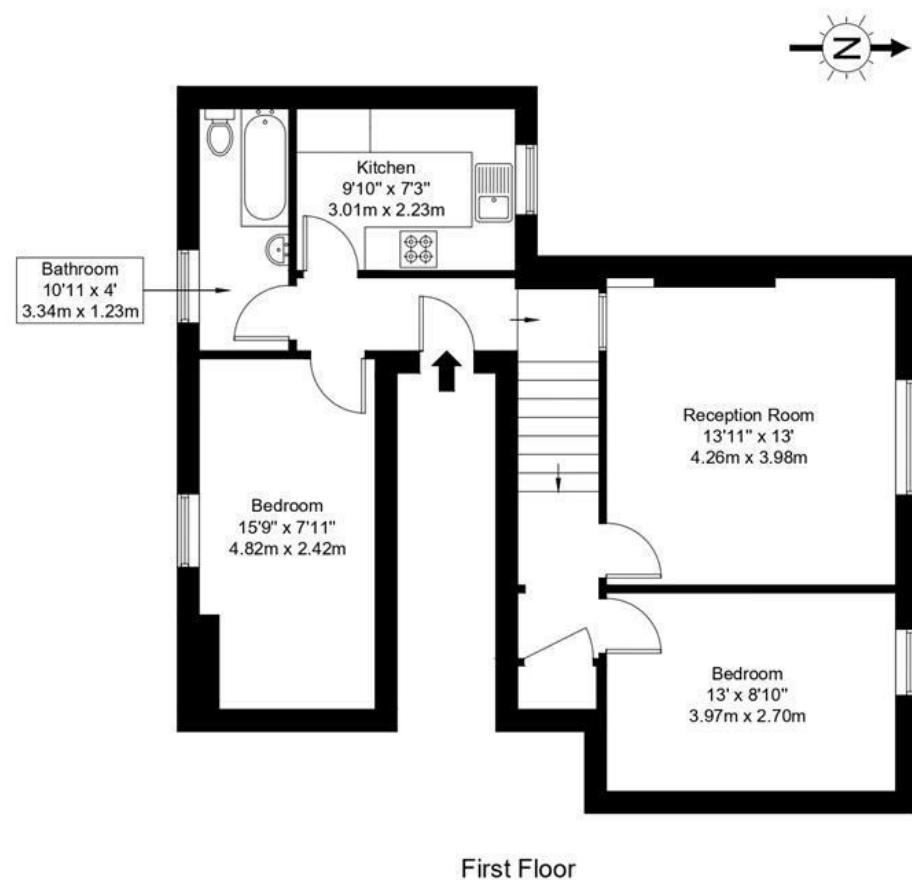


Upper Richmond Road, SW15 6SU

Approx Gross Internal Area = 61.8 sq m / 665 sq ft



Ref :

Copyright **BLEU PLAN**

The Floor plan is not to scale and measurements and areas shown are approximate and therefore should be used for illustrative purposes only. The plan has been prepared in accordance with the RICS code of Measuring Practice and whilst we have confidence in the information produced it must not be relied on. Maximum lengths and widths are represented on the floor plan. If there is any aspect of particular importance, you should carry out or commission your own inspection of the property.
Copyright © BleuPlan



DISCLAIMER•These particulars are intended to give a fair and substantially correct overall description for the guidance of intending purchasers and do not constitute an offer or part of a contract. Prospective purchasers and/or lessees ought to seek their own professional advice.
•All descriptions, dimensions, areas, references to condition and necessary permissions for use and occupation and other details are given in good faith and are believed to be correct, but any intending purchasers should not rely on them as statements or representations of fact, but must satisfy themselves by inspection or otherwise as to the correctness of each of them.
•All measurements are approximate.

Upper Richmond Road, London, SW15

A spacious (665 SQ FT) two double bedroom, first floor apartment within a double fronted period house with off street parking, set back from The Upper Richmond Road. The apartment comprises; entrance hallway, a good-sized reception room, guest bedroom, family bathroom, kitchen and double bedroom. The apartment is set back from the Upper Richmond Road and is within easy walking distance to the amenities and transport links of Putney High Street. This property is being sold Chain Free.



- 665 SQ FT
- MASTER BEDROOM
- KITCHEN
- FAMILY BATHROOM
- CHAIN FREE
- FIRST FLOOR APARTMENT
- GUEST DOUBLE BEDROOM
- RECEPTION ROOM
- OFF STREET PARKING
- EPC RATING: E

Guide Price
£460,000
Available

